



Product Service

# CERTIFICATE

No. B 16 04 72546 027

**Holder of Certificate:** **Kintron Electronics Co., Ltd**

17F-3, No. 266, Sec. 1, Wenhua 2nd Rd.  
Linkou District  
244 New Taipei city  
TAIWAN



**Certification Mark:**



**Product:**

**Power supplies  
( Switching Power Supply )**

The product was tested on a voluntary basis and complies with the essential requirements. The certification mark shown above can be affixed on the product. It is not permitted to alter the certification mark in any way. In addition the certification holder must not transfer the certificate to third parties. See also notes overleaf.

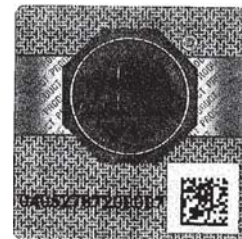
**Test report no.:** 612101636801

**Valid until:** 2021-04-17

**Date,** 2016-04-28  
Page 1 of 3

*Watson Yang*

( Watson Yang )





Product Service

**CERTIFICATE****No. B 16 04 72546 027****Model(s):**

KTxxx, KTxxxHA

("xxx" can be 200 or 300 to denote the different output power)

KTabb-M, KTabbV-M

("a" can be 1 (to denote the power module) or 2 (to denote 1+1 redundant power), "bb" can be 25, 30 or 35 to denote the different output power )

**Brand Name:****KINTRON****Parameters:**

Rated inputs:	See attachment
Rated outputs:	See attachment
Protection class:	I
Max. ambient temperature:	50 °C
Degree of protection against ingress of liquids:	Ordinary

Remark: When installing, all requirements of below mentioned test standards must be fulfilled.

**Tested according to:**

EN 60950-1:2006/A2:2013

**Production Facility(ies):**

72546

Page 2 of 3



Taiwan

The following models of Switching Power Supply "KTxxx, KTxxxHA, KTabb-M, KTabbV-M" will be covered by above certificate:

Model-#	Input Rating	DC Output Rating		
		+12V	+5VSB	Total Watt. (Max.)
KT200	100-240 Vac, 3-1.5 A, 47-63 Hz	16	2	200
KT300	100-240 Vac, 5-2.5 A, 47-63 Hz	24	2	300
KT125-M	100-240 Vac, 4-2 A, 47-63 Hz	19	2	250
KT130-M	100-240 Vac, 5-2.5 A, 47-63 Hz	24	2	300
KT135-M	100-240 Vac, 5-2.5 A, 47-63 Hz	28	2	350

Model-#	Input Rating	DC Output Rating						Total Watt. (Max.)
		+12V	5VSB	-12V	3.3V	+5V	3.3V& +5V	
KT200HA	100-240 Vac, 3-1.5 A, 47-63 Hz	16	2	0.5	20	20	120W	200W
		16	2	--	--	--	--	
KT300HA	100-240Vac, 5-2.5 A, 47-63 Hz	24	2	0.5	20	20	120W	300W
		24	2	--	--	--	--	
KT225V-M	100-240 Vac, 4-2 A, 47-63 Hz	19	2	0.5	20	20	120W	250W
		19	2	--	--	--	--	
KT230V-M	100-240 Vac, 5-2.5 A, 47-63 Hz	24	2	0.5	20	20	120W	300W
		24	2	--	--	--	--	
KT235V-M	100-240 Vac, 5-2.5 A, 47-63 Hz	28	2	0.5	20	20	120W	350W
		28	2	--	--	--	--	

Date: 2016-04-28



Testing Laboratory

Watson Yang